

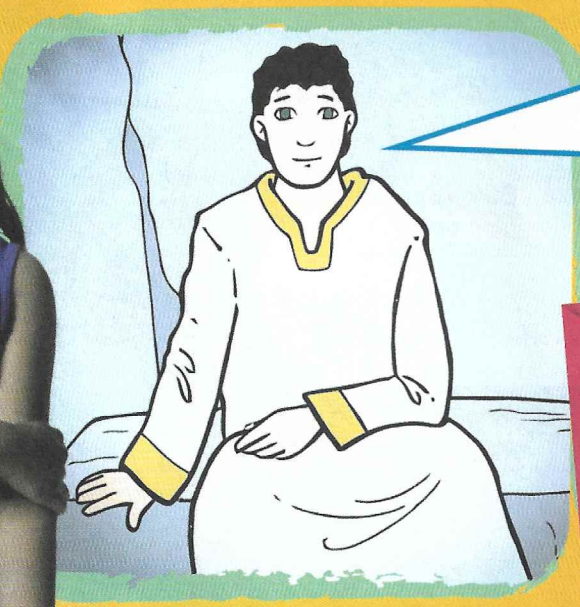
What was torn from top to bottom?

TRUE OR FALSE

Write T or F

- Jesus was put in Peter's tomb.
- Two women saw where Joseph put Jesus' body.
- The disciples went to the tomb the next morning.
- The stone had disappeared.
- A young man dressed in white sat inside the tomb.

THIS MEANT THAT THE WAY BACK TO GOD WAS OPEN BECAUSE JESUS DIED TO FORGIVE OUR SINS.

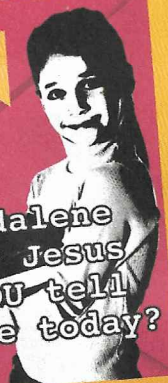


Complete what he said. Mark 16:6
Jesus... who was crucified...
 He _____
 He _____ here.

READ

John 20:18

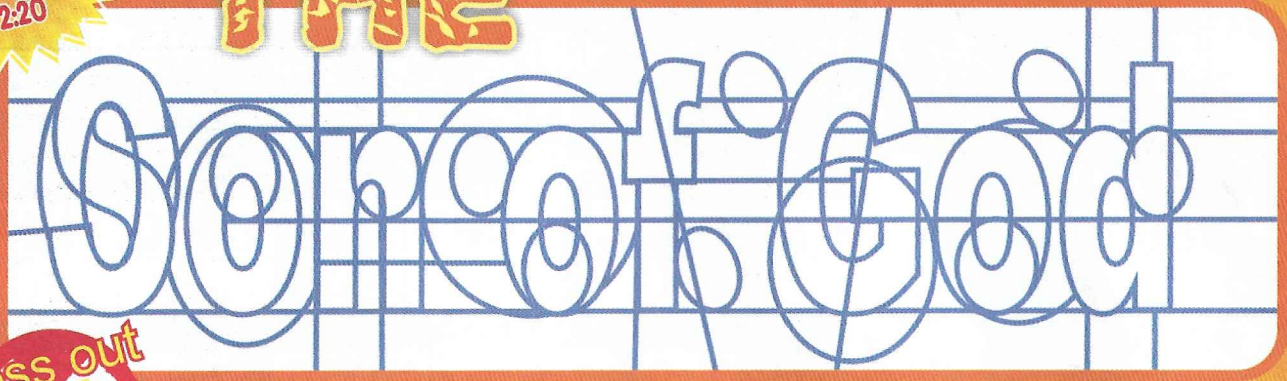
Who did Mary Magdalene tell when she saw Jesus alive? Who can YOU tell that Jesus is alive today?



Verse to learn
 Galatians 2:20

THE

Find and Colour in the letters



Cross out
 the words you don't need

... loved came me give and life
 gave a himself for me

JESUS DIED SO THAT WE CAN BE FORGIVEN FOR OUR SIN AND HAVE NEW LIFE IF WE TRUST IN HIM.